

Ceramic Urinal with the Radar Flushing Unit SLP 20R

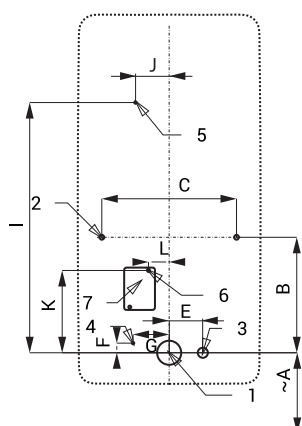


SLP 20 - ANTERO

Characteristics

- easy installation
- whole flushing unit is placed behind the urinal
- system reacts only on the direct use of the urinal (it analyses changes, which are proceeded inside of the urinal, when a liquid is flowing through)
- adjustable flushing time 0,5 - 15,5 s
- parameters adjustment by remote control SLD 04 without the necessity to dismantle the urinal from the wall (acoustic setting indication)
- automatic flushing after each 6 hours non-use
- possibility to regulate a water flow by the angle valve
- radar flushing unit recharges a water to the siphon after each flushing

Installation Drawing



- 1 - waste outlet Ø 50 mm
2 - holes for fitting
3 - water supply
4 - power supply 230 V AC (SLP 20RZ)
5 - power supply 24 V DC (SLP 20R)
6 - holes for wall plug
7 - power supply

SLP 20

Technical Specification

Operating voltage

- SLP 20R 24 V DC
- SLP 20RZ 230 V AC/50 Hz

Power input

- operating by 24 V DC 8 W

Recommended flow pressure

- 0,1 - 0,6 MPa

Rate of flow

- 18 l/min (inf. data)

Water inlet

- male thread G 1/2"

Water outlet

- inlet fitting with a rubber seal



SLA 11



SLA 11A



SLA 11B



SLA 11C

Dimensions (mm)	A	B	C	D	E	F	G	H	I	J	K	L
SLP 20 - ANTERO	350	240	280		70	20	75		520	70	171	43

* for the height of the front edge of the urinal 650 mm above floor

Supply Specification

- SLP 20R - Supply No. 01204 ceramic urinal with radar flushing unit, electromagnetic valve, connecting hoses,
SLP 20RZ - Supply No. 01205 angle valve with a filter and check valve, inlet fitting with a rubber sealing, mounting set, power supply (SLP 20RZ)

Recommended Accessories

- SLZ 01Y - Supply No. 05012 power supply 24 V DC for operating of max. 5 pcs. of flushing units
SLZ 01Z - Supply No. 05011 power supply 24 V DC for operating of max. 9 pcs. of flushing units
SLZ 04Y - Supply No. 05042 power supply 24 V DC on DIN rail, for operating of max. 5 pcs. of flushing units
SLZ 04Z - Supply No. 05041 power supply 24 V DC on DIN rail, for operating of max. 9 pcs. of flushing units
SLZ 04X - Supply No. 10049 power supply 24 V DC on DIN rail, for operating of max. 15 pcs. of flushing units
SLZ 06 - Supply No. 05060 power supply 24 V DC for operating of max. 1 pc. of flushing unit
SLD 04 - Supply No. 07040 remote control for an adjustment of parameters
SLA 11 - Supply No. 06110 deodorising urinal screen - orange, mango scent
SLA 11A - Supply No. 06111 deodorising urinal screen - red, kiwi and grapefruit scent
SLA 11B - Supply No. 06112 deodorising urinal screen - transparent, honeysuckle scent
SLA 11C - Supply No. 06113 deodorising urinal screen - blue, cotton bloom scent
SLR 01L - Supply No. 08010 mounting frame to the plasterboard for the urinal with radar flushing unit on the mounting rail